

**Prolactin Receptor (hPRL-Receptor) Antibody - With BSA and Azide**  
**Mouse Monoclonal Antibody [Clone SPM213 ]**  
**Catalog # AH10683**

**Specification**

---

**Prolactin Receptor (hPRL-Receptor) Antibody - With BSA and Azide - Product Information**

Application	IHC-P, IF, FC
Primary Accession	<a href="#">P16471</a>
Other Accession	<a href="#">5618</a> , <a href="#">368587</a>
Reactivity	Human
Host	Mouse
Clonality	Monoclonal
Isotype	Mouse / IgG1, kappa
Calculated MW	70kDa KDa

**Prolactin Receptor (hPRL-Receptor) Antibody - With BSA and Azide - Additional Information**

**Gene ID** 5618

**Other Names**

Prolactin receptor, PRL-R, PRLR

**Application Note**

IHC-P~~N/A  
IF~~1:50~200  
FC~~1:10~50

**Format**

200ug/ml of Ab purified from Bioreactor Concentrate by Protein A/G. Prepared in 10mM PBS with 0.05% BSA & 0.05% azide. Also available WITHOUT BSA at 1.0mg/ml.

**Storage**

Store at 2 to 8°C. Antibody is stable for 24 months.

**Precautions**

Prolactin Receptor (hPRL-Receptor) Antibody - With BSA and Azide is for research use only and not for use in diagnostic or therapeutic procedures.

**Prolactin Receptor (hPRL-Receptor) Antibody - With BSA and Azide - Protein Information**

**Name** PRLR

**Function**

This is a receptor for the anterior pituitary hormone prolactin (PRL). Acts as a prosurvival factor for spermatozoa by inhibiting sperm capacitation through suppression of SRC kinase activation and stimulation of AKT. Isoform 4 is unable to transduce prolactin signaling. Isoform 6 is unable to transduce prolactin signaling.

**Cellular Location**

Membrane; Single-pass type I membrane protein

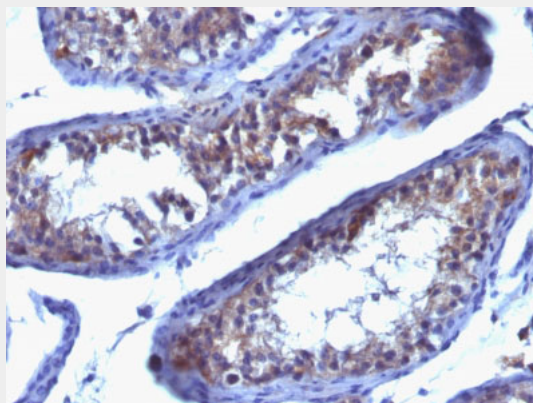
**Tissue Location**

Expressed in breast, placenta, kidney, liver and pancreas.

**Prolactin Receptor (hPRL-Receptor) Antibody - With BSA and Azide - Protocols**

Provided below are standard protocols that you may find useful for product applications.

- [Western Blot](#)
- [Blocking Peptides](#)
- [Dot Blot](#)
- [Immunohistochemistry](#)
- [Immunofluorescence](#)
- [Immunoprecipitation](#)
- [Flow Cytometry](#)
- [Cell Culture](#)

**Prolactin Receptor (hPRL-Receptor) Antibody - With BSA and Azide - Images**

Formalin-fixed, paraffin-embedded human Testicular Carcinoma stained with Prolactin Receptor Monoclonal Antibody (SPM213).

**Prolactin Receptor (hPRL-Receptor) Antibody - With BSA and Azide - Background**

It recognizes a protein of 70kDa, identified as prolactin receptor. Prolactin is a pituitary hormone involved in the stimulation of milk production, salt and water regulation, growth, development and reproduction. The initial step in its action is the binding to a specific membrane receptor (prolactin receptor), which belongs to the superfamily of class 1 cytokine receptors. The function of the prolactin receptor is mediated, at least in part, by two families of signaling molecules: Janus kinases and signal transducers and activators of transcription.

**Prolactin Receptor (hPRL-Receptor) Antibody - With BSA and Azide - References**

Br J Cancer. 2011;104(10):1641-8. | Breast Cancer Res. 2008;10(4):R68. | Histopathology. 2008;53(1):56-61. | Mod Pathol. 2010;23(7):961-71. | Breast Cancer Res Treat. 2011;128(1):31-40